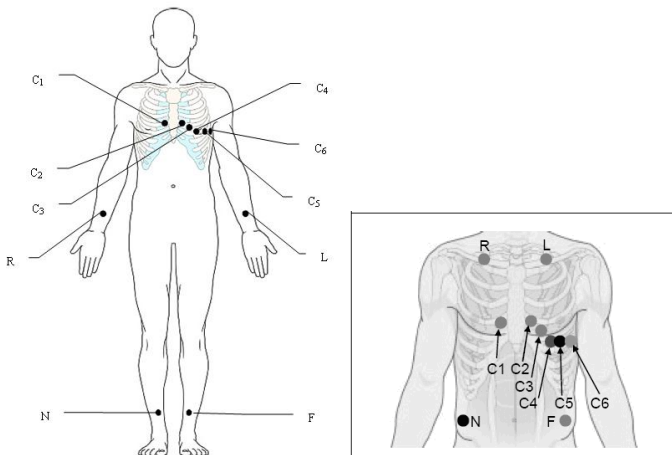


## Operation Instructions

Connect the power adapter (when the mains supply is used) ->  
 Connect the earth wire (when necessary) -> Load the recorder paper ->  
 Connect the patient cable to the patient cable socket on the right side of the unit -> Connect the lead wires of the patient cable to the electrodes -> Clean the electrode areas on the body surface with 75% alcohol -> Daub the electrode areas with gel evenly -> Attach all the electrodes to the patient -> Press the power key to turn on the device.

### 1 Attaching Lead Wires and Electrodes, Checking ECG Signals



### Signal Quality Indicators

See the hint information and ECG waves displayed on the LCD screen of the electrocardiograph.

### Phenomena

- The hint *Lead Off* is displayed
- A lead name is highlighted
- An ECG wave shows a straight line

### Indications

- Loose electrode connection
- Loose patient cable connection

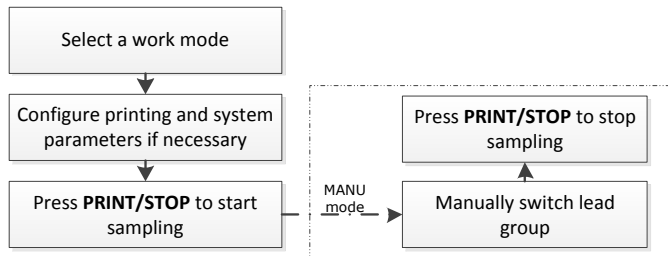
### Possible Causes

- Inoperative electrode, the electrode falls off the patient
- Loose connection between the patient cable and the patient cable socket of the electrocardiograph
- Loose connection between lead wires and electrodes

## 2 Entering Patient Information

On the main screen, click the patient symbol to enter the patient information window, enter the patient information, or you can configure the patient information items in system setup first.

## 3 Printing an Auto ECG Report



## Printing Troubleshooting

Phenomena	Solutions
Paper-jam	Open the recorder casing, pull the paper out, tear the pages with rumples, and replace the paper in the right direction.
The hint <i>PaperErr</i> is displayed	It might be the result of unsuccessful detection of the black markers. Check whether the black marker is on the top of the paper.
The hint <i>Paper?</i> is displayed	Check whether the paper runs out, or the black marker is just facing the black marker detection window on the thermal print head.

## Keys

A	Power Key	Press this key to turn on or off the device.
B	PRINT/STOP Key	Press this key to begin or stop printing ECG reports.
C	PRESS Key	Press this key to open the recorder.

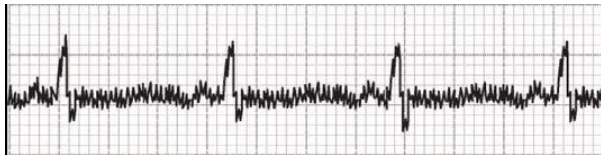
## Loading paper

- 1) Press the PRESS key to open the recorder.
- 2) For the folded paper, remove remainder paper in the paper tray if necessary. Take off the wrapper of the new folded thermal paper, and then put it in the paper tray. Pull about 2 cm of paper out with the grid side of the paper facing the thermal print head, and shut the recorder casing.

- 3) For the rolled paper, take out the paper roller, and remove remainder paper from the roller if necessary. Take off the wrapper of the new thermal paper roll, and then put the paper roll through the roller. Place the paper and the roller gently in the recorder with the roller pin clicking into the groove. Pull about 2 cm of paper out with the grid side of the paper facing the thermal print head, and shut the recorder casing.
- 4) Press down the recorder casing firmly.

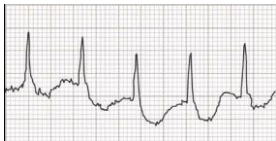
## Signal Quality Troubleshooting

### AC Interference



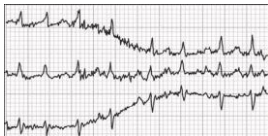
Possible Causes	Solutions
<ul style="list-style-type: none"> <li>➤ Electrical interference from another device (microwave oven, cellular phone, wireless device, etc.)</li> <li>➤ An improperly-grounded electrical device near the electrocardiograph</li> <li>➤ An improperly gelled electrode (dried gel)</li> </ul>	<ul style="list-style-type: none"> <li>➤ Look for devices that could be causing electrical interference, and then unplug the devices. Or run the electrocardiograph on the battery power</li> <li>➤ Lay the lead wires alongside the limbs and away from any electrical devices</li> <li>➤ Turn on the AC filter on the system setup interface</li> </ul>

## Wandering Baseline



Possible Causes	Solutions
<ul style="list-style-type: none"> <li>➤ Inadequate patient preparation</li> <li>➤ Moderate patient movement</li> <li>➤ Very poor electrode contact</li> <li>➤ Patient respiratory interference</li> </ul>	<ul style="list-style-type: none"> <li>➤ Reassure the patient and make sure that the patient is comfortable. If the patient has tremors, attach the limb electrodes higher on the patient (closer to torso)</li> <li>➤ Ensure that the lead wires are not pulling at the electrodes and that the electrodes are firmly attached</li> <li>➤ Set the DFT filter to <b>0.67Hz</b> on the system setup interface</li> </ul>

## Somatic Tremors



Possible Causes	Solutions
<ul style="list-style-type: none"> <li>➤ The patient is cold and shivering</li> <li>➤ The patient has tremors</li> <li>➤ The patient is nervous</li> </ul>	<ul style="list-style-type: none"> <li>➤ Place a blanket on the patient to warm the patient</li> <li>➤ Assist with limiting patient movement</li> <li>➤ Reassure the patient and make sure that the patient is comfortable.</li> <li>➤ Decrease the set value of the EMG filter on the system setup interface</li> </ul>

P/N: 01.54.456720

MPN: 01.54.456720010